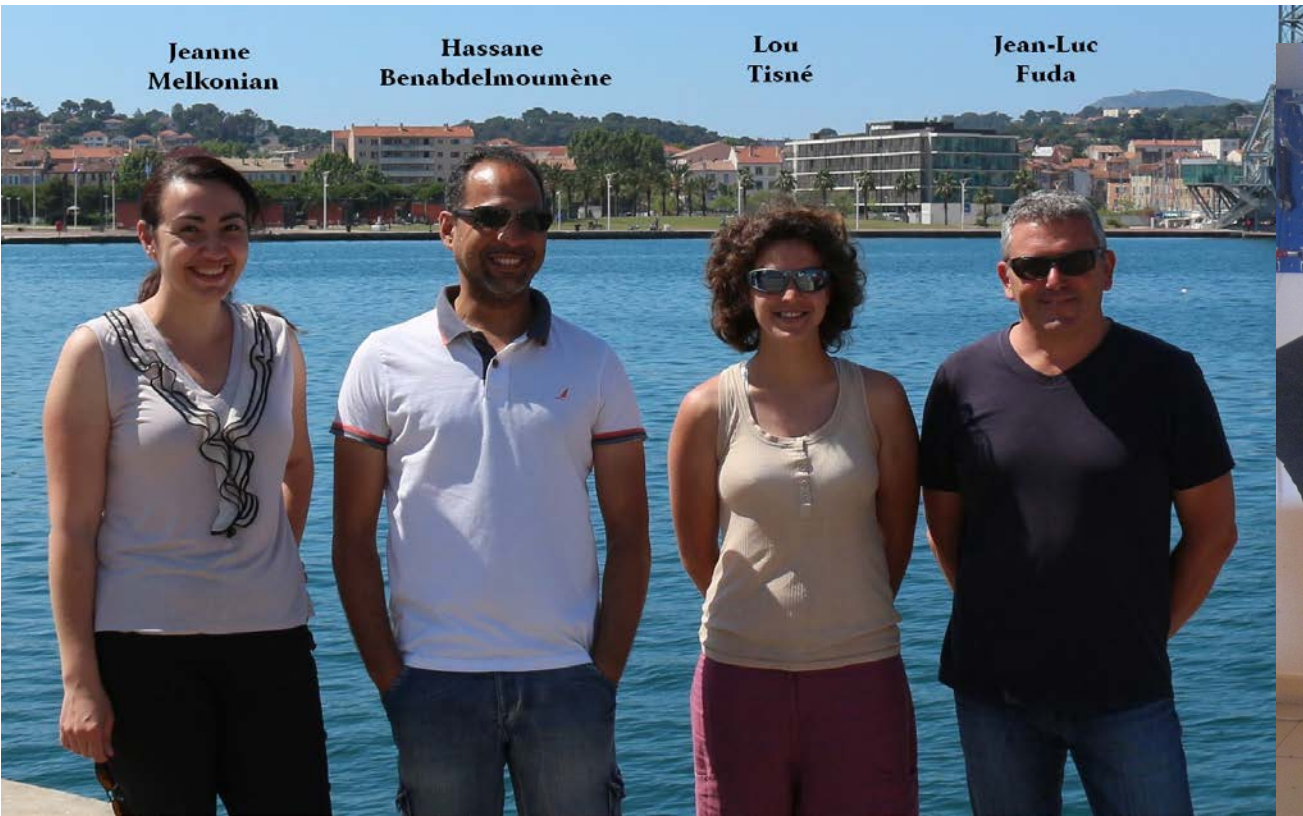


Le parc national glider



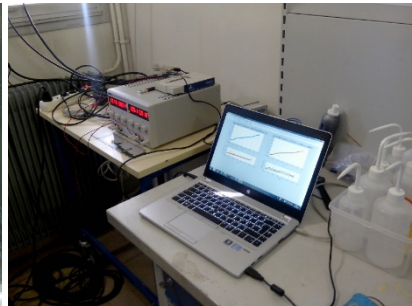
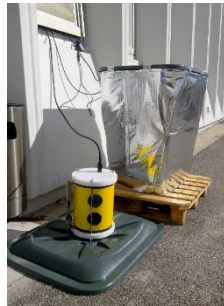
History



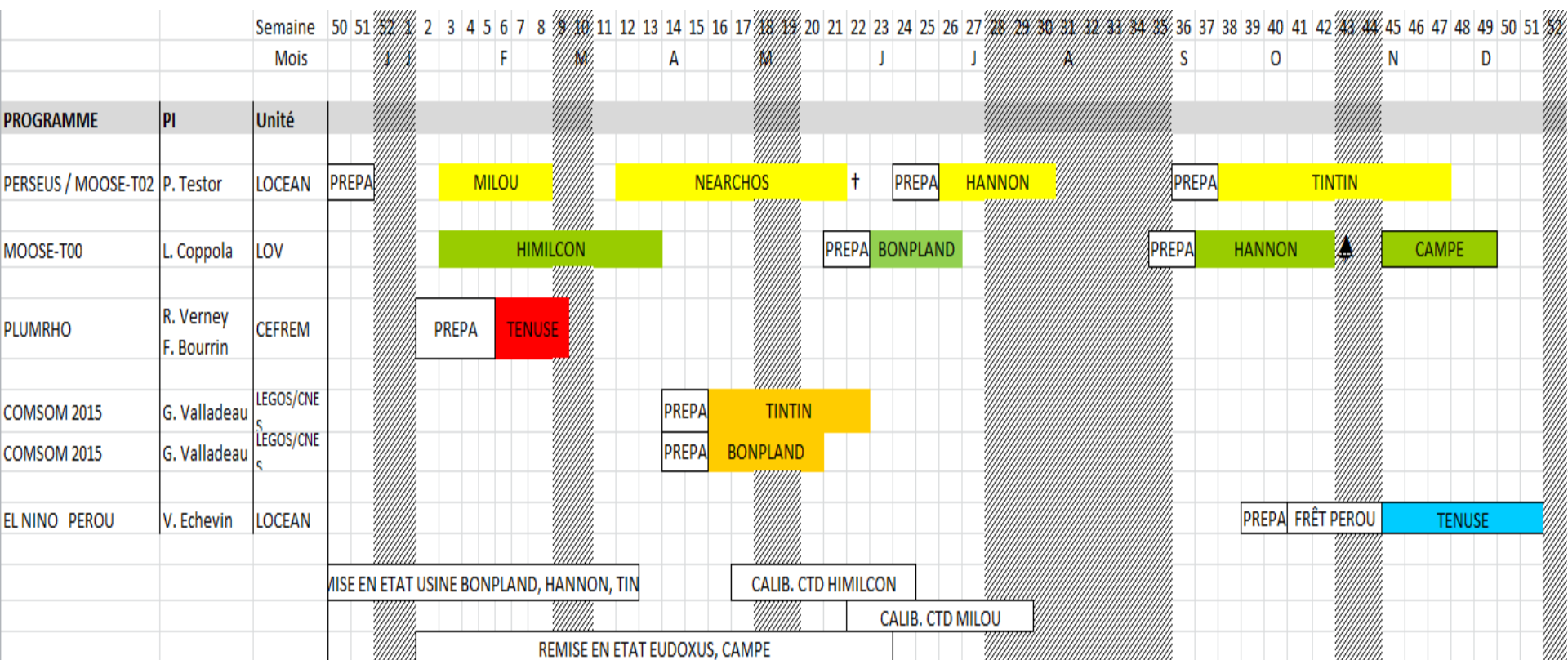
- **Creation in 2008 as a national facility at La Seyne sur Mer, led by Laurent Beguery**
- **Progressively equipped with 9 Slocum and 2 Seagliders**
- **The yearly call is coordinated with LEFE, with a specific document to be sent to the DT-INSU**
- **Real time remote steering, control and data visualization developed at LOCEAN and DT-INSU.**
- **Coordination with data centers (Coriolis)**
- **Involvement in 6 major European projects (P. Testor)**
- **Very intense activity in 2011-2012**
- **Audit in 2014, after half of the team left for other positions and the service stopped.**

Recent improvements

- Jean-Luc Fuda in charge of the park since Apr. 2014
- Dec. 2014: first of the biannual meetings of the renewed CNPG (Comité National de Pilotage Gliders) in charge of the link between science and operations (planning, new developments, investments, implementation of the recommendations of the audit).
- Mid 2015: the team is back to 4.5 “ETP”
- Technical improvements
- Operational improvements (deployment and steering)
- Control of the CT sensors on site



Glider operations in 2015



18 months of operations: back to the rhythm of the early years

Why using gliders?

- **Observatory: MOOSE (Bosse et al., 2015; ...)**
- **Process study: El Niño**
- **Testing new sensors for process studies: the Rhône plume**
- **Interpreting new altimetric data: CryoSat-2**
- **Improving models with assimilation (Melet et al., 2011; ...)**

Interested in using gliders?

How to apply

- **Elaborate your scientific project**
- **Contact Jean-Luc Fuda for feasibility before submitting**
- **Submit your scientific project to a national (LEFE, ANR, SOERE...) and the specific glider application to the glider park or the DT-INSU.**
- **The funding of the project must include the cost of 6600€ per glider month plus the funds for transport and travel.**
- **In the future, the CNPG will evaluate applications twice a year, to accommodate with the different calendars.**
- **The demand can bear on the whole glider service, or just ask for support for other gliders.**
- **An application without a national scientific validation is not a priority and may be billed full cost**

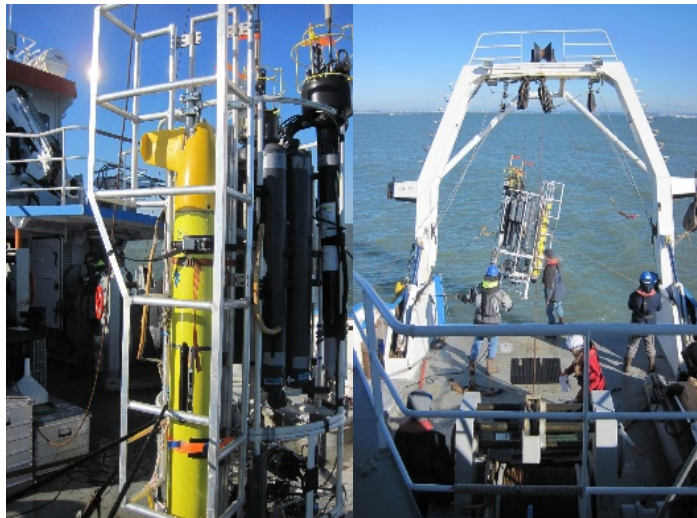
Additional information on

- <http://www.ego-network.org/>
- <https://gliderdsia.dt.insu.cnrs.fr/>
- <https://twitter.com/glidercnrs>



Today's challenges

- Glider fleet renewal
- Rigorous planning management
- Convention between the different organisms
- Full-resolution database
- More scientific animation



Thank you

Gliders CNRS DT INSU

@GliderCNRS

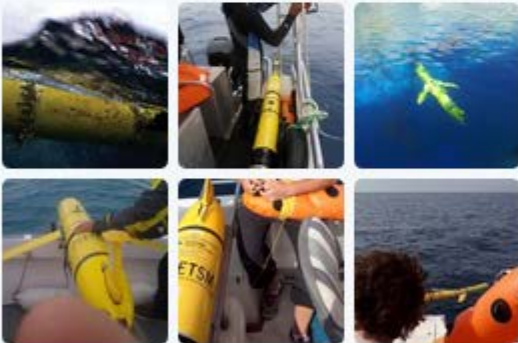
Le parc national des planeurs sous-marins est géré et opéré par la Division Technique de l'INSU CNRS dans les locaux du CETSM-IFREMER Méditerranée

📍 La Seyne-sur-Mer, France

🔗 dt.insu.cnrs.fr/gliders/glider...

📅 Inscrit en juillet 2015

📷 84 Photos et vidéos



Tweets

Tweets & réponses

Medias



Gliders CNRS DT INSU @GliderCNRS · 9 h

#JourneeMondialedesOceans #Gliders
parc national des planeurs sous-marins
bit.ly/1TYyUYS
@CNRS @Ifremer_fr

